

CASE REPORT

Open Access

Unusual epileptic deterioration and extensive white matter lesion during treatment in Wilson's disease

Young Eun Kim^{1,2}, Ji Young Yun^{2,3}, Hui-Jun Yang^{2,4}, Han-Joon Kim^{2,5} and Beom S Jeon^{4*}

Abstract

Background: Wilson's disease (WD) is a genetic disorder which can be controlled fairly well with decupuration therapy. However, symptoms, on rare occasions, can worsen even when WD is being treated. Herein, we report a case involving unusual neurological deterioration during decupuration therapy for WD.

Case presentation: A 28-year-old man was diagnosed with WD 13 years prior to his clinical visit; however, his drug compliance has been poor over the years. He was treated with trientine because tremors and dysarthria have presented in recent years. However, dysarthria and dystonia developed in his limbs, which were worse on the right side and had been aggravated for several weeks despite good drug compliance. His symptoms were fluctuating. It was initially misdiagnosed as dystonia; although, it turned out to be a seizure due to cortical degeneration. These symptoms were completely resolved with antiepileptic drugs. Moreover, the cortical enhancement of bifrontal degeneration has disappeared on the MRI.

Conclusion: This case showed unusual epileptic neurologic deterioration due to cortical degeneration during decupuration therapy. Seizures in WD can easily be mistaken as part of dystonia. However, the fluctuating symptoms suggest a seizure.

Keywords: Wilson's disease, Seizure, Dystonia, Cortical lesion: MRI

Background

Wilson disease (WD) is a disorder involving copper metabolism characterized by impaired excretion of this metal [1]. Neurological worsening during decupuration therapy may be due to the side effects of the drug, improper treatment, poor drug compliance, drug resistance, or fulminant disease [2,3]. This case shows unusual neurological deterioration and cortical degeneration during decupuration therapy for WD.

Case presentation

A 28-year-old male was diagnosed with WD in 1997, when he was 15 years old. Kayser-Fleischer ring was found incidentally during ophthalmological examination for itchy eyes. The serum ceruloplasmin was 3.5 mg/dl (normal range 15-40); the serum copper was 38 ug/dl (normal range

70-155); and the 24 hour urine copper was 1620 ug/day (normal range 0-75). Abdominal sonography showed chronic liver disease and brain MRI was compatible with WD; however, he did not have hepatic or neurological symptoms at that time. As the treatment regime, Penicillamine was tried initially, and then, it was switched to trientine because of the side effects such as paresthesia. Compliance was poor for 10 years because he did not have any symptoms. In late 2009, tremors and behavioral changes including irritability, aggressive behavior, and a somewhat depressive mood developed and became progressively worse. He visited our clinic in May 2010. Dystonic tremor in the right hand and mild dysarthria was the main feature upon initial examination. The serum ceruloplasmin was repeatedly less than 8 mg/dl; the serum copper was 37.3 ug/dl, and the 24 hour urine was 630 ug/day. Kayser-Fleischer ring was present. Trientine was prescribed with a gradual increase to 1000 mg; however, he complained of worsening stuttering, tremor, and gait disturbance for the next several months, and more aggravation

* Correspondence: brain@snu.ac.kr

⁴Department of Neurology, Ulsan University Hospital, Ulsan, Korea
Full list of author information is available at the end of the article

in the 2 weeks prior to his admission. He attested he had good compliance in taking his meds.

He was admitted to the hospital to evaluate his deterioration in September 2010.

Upon admission, he had dysarthria, stuttering, and bilateral dystonic movements in the limbs, which were worse on the right side. Neurological examination showed mild motor impairment, brisk deep tendon reflexes, and extensor plantar responses, mainly on the right leg. His speech disturbance and dystonia had peculiar fluctuations with intermittent worsening without change of alertness lasting from several minutes to an hour, and occurring many times a day (Additional file 1). At times, he became almost anarthric and unable to move the affected parts with stiffening. In general, his neurological condition progressively deteriorated with the above mentioned intermittent worsening during his hospital stay. Blood and urine studies showed good compliance for his medication (serum copper was 16.5 ug/dL and 24 hour urine copper was 613 ug/day). Brain MRI was done after we confirmed above neurologic findings and showed high signal intensity lesions on the bilateral paramedian superior frontal gyri as well as on the basal ganglia, thalamus, and brain stem on T2, Flare, and DWI. Contrast enhancement was present on the left superior frontal gyrus (see Figure 1A).

Video EEG monitoring showed multiple episodes of stiffening of the right arm followed by dystonic then rhythmic tremor of the right leg, which correlated with the left frontal rhythmic delta activity (Additional file 2). Levetiracetam 2500 mg and Trileptal 1200 mg markedly improved his neurological symptoms. Upon brain MRI, cortical enhancement almost disappeared one month after antiepileptic medications (see Figure 1B).

Conclusions

This case presented unusual epileptic neurological deterioration in WD. Fluctuating deterioration of focal neurologic deficit during decupuration can be mistaken as a part of dystonia in WD because dystonia is usually aggravated on action and it is rather common in WD. However, fluctuating symptoms suggested seizures in this case. Seizure should be considered as one of the causes of neurologic deterioration in WD.

The seizures are probably related to Wilsonian cortical damages in this case. The resolution of the neurological symptoms and cortical enhancement after antiepileptic medication suggests that there were secondary cortical changes following the seizures.

WD with extensive white matter lesions represents a rare neuropathological subgroup, the pathogenesis of which is not clearly determined [4-7]. These abnormalities occur mainly in the frontal lobe [5]. And most of the patients with extensive WML were non-treated patients with a very severe form of the disease, and had very poor prognosis [4]. Epilepsy is not a common manifestation of WD, but is present and more common in a WD population with WML rather than just the general WD population [6,7]. However there have been no reports on seizures provoking a secondary change of the WML in WD or on the resolution of the cortical enhancement following AED. Based on the chronological changes on MRI in our case, seizures appear to have contributed to extensive WML and cortical enhancement.

Epilepsy may mimic dystonia when the spells cause posturing. Nocturnal paroxysmal dystonia, which was previously misclassified as primary movement disorder, is now recognized to be a manifestation of nocturnal frontal lobe epilepsy [8]. De Silva et al. reported that

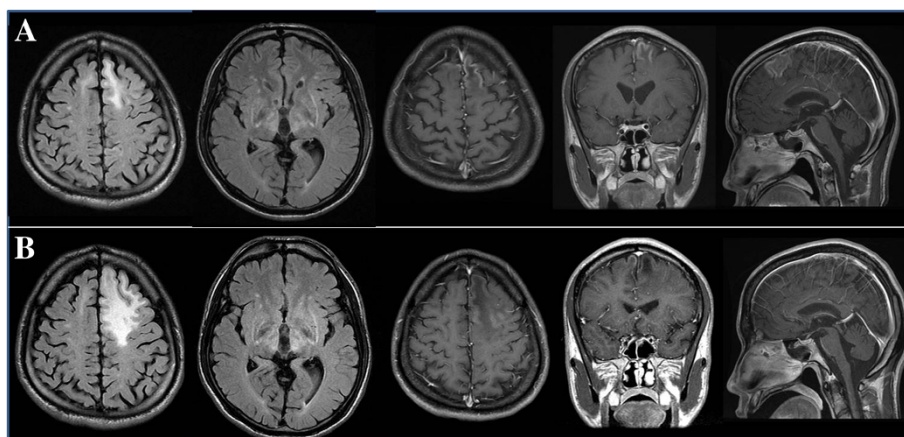


Figure 1 The change of MRI over time (A) MRI before the treatment with antiepileptics after admission shows high signal intensity on both paramedian superior frontal gyri, both basal ganglia and thalamus in the FLARE image, and cortical enhancement on the left superior frontal gyrus in the T1 enhanced image. (B) Cortical enhancement of left superior frontal gyrus resolved at 1 month after treatment with the antiepileptics.

prolonged hand spasm can be the only presentation of focal epilepticus [9]. Our case showed paroxysmal and fluctuating spasms, which prompted us to suspect epilepsy. Early suspicion and diagnosis of seizures can prevent the secondary generalization and complications.

Consent

Written informed consent was obtained from the patient for publication of this Case report, any accompanying images and videos. A copy of the written consent is available for review by the Editor-in-Chief of this journal.

Additional files

Additional file 1: Segment 1 shows dysarthria and bilateral dystonic movements in the limbs, which are worse on the right side. His speech disturbance and dystonia had peculiar fluctuations with intermittent worsening.

Additional file 2: Segment 2 is a video EEG monitored segment showing an episode of the stiffening of the right arm followed by rhythmic tremor of the right leg, which correlated with the left frontal rhythmic delta activity and epileptiform discharges.

Competing interests

All authors declare that they have no competing interests.

Authors' contributions

YEK: drafting/revising/critique the manuscript, study concept or design, collection of data. JYY: revising/critique the manuscript. HJY: revising/critique the manuscript. HJK: revising/critique the manuscript. BSJ: drafting/revising/critique the manuscript, study concept or design, supervision. All authors read and approved the final manuscript.

Acknowledgements

This work was supported by a grant of the Korea Health technology R&D Project, Ministry of Health & Welfare, Republic of Korea, grant number A101038.

Author details

¹Department of Neurology, Seoul National University Bundang Hospital, Seoul National University College of Medicine, Gyeonggi, Korea. ²Department of Neurology and Movement disorder center, Parkinson Study Group, Seoul National University Hospital, Seoul, Korea. ³Department of Neurology, Ewha Womans University Mokdong Hospital, Seoul, Korea. ⁴Department of Neurology, Ulsan University Hospital, Ulsan, Korea. ⁵Department of Neurology, Seoul National University Hospital, Seoul National University College of Medicine, Seoul, Korea.

Received: 21 September 2012 Accepted: 3 September 2013

Published: 25 September 2013

References

1. Ala A, Walker AP, Ashkan K, Dooley JS, Schilsky ML: **Wilson's disease.** *Lancet* 2007, **369**:397-408.
2. Aikath D, Gupta A, Chattopadhyay I, Hashmi MA, Gangopadhyay PK, Das SK, Ray K: **Subcortical white matter abnormalities related to drug resistance in Wilson disease.** *Neurology* 2006, **67**:878-880.
3. Brewer GJ, Terry CA, Aisen AM, Hill GM: **Worsening of neurologic syndrome in patients with Wilson's disease with initial penicillamine therapy.** *Archives of neurology* 1987, **44**:490-493.
4. Mikol J, Vital C, Wassef M, Chappuis P, Poupon J, Lecharpentier M, Woimant F: **Extensive cortico-subcortical lesions in Wilson's disease: clinico-pathological study of two cases.** *Acta Neuropathol* 2005, **110**:451-458.
5. Starosta-Rubinstein S, Young AB, Kluin K, Hill G, Aisen AM, Gabrielsen T, Brewer GJ: **Clinical assessment of 31 patients with Wilson's disease:**

correlations with structural changes on magnetic resonance imaging. *Archives of neurology* 1987, **44**:365-370.

6. Barbosa ER, Silveira-Moriyama L, Machado AC, Bacheschi LA, Rosemberg S, Scaff M: **Wilson's disease with myoclonus and white matter lesions.** *Parkinsonism Relat D* 2007, **13**:185-188.
7. Denning TR, Berrios GE, Walshe JM: **Wilson's-disease and epilepsy.** *Brain* 1988, **111**:1139-1155.
8. Derry CP, Duncan JS, Berkovic SF: **Paroxysmal motor disorders of sleep: the clinical spectrum and differentiation from epilepsy.** *Epilepsia* 2006, **47**:1775-1791.
9. De Silva DA, Lim SH, Tan EK: **Persistent hand spasm: movement disorder or seizure?** *J Neurol Sci* 2007, **252**:185-188.

doi:10.1186/1471-2377-13-127

Cite this article as: Kim et al.: Unusual epileptic deterioration and extensive white matter lesion during treatment in Wilson's disease. *BMC Neurology* 2013 **13**:127.

Submit your next manuscript to BioMed Central and take full advantage of:

- Convenient online submission
- Thorough peer review
- No space constraints or color figure charges
- Immediate publication on acceptance
- Inclusion in PubMed, CAS, Scopus and Google Scholar
- Research which is freely available for redistribution

Submit your manuscript at
www.biomedcentral.com/submit

